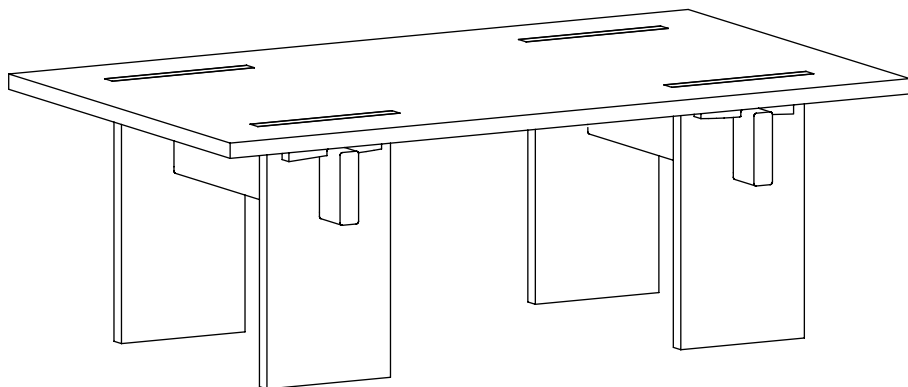


Arnold – Assembly Guide



Assembly Guide Video

On our website you will find guidelines to help you make sure that your furniture is assembled correctly. Access our assembly guides with ease using the camera on your smartphone to scan the QR code on the left.

Find more information about our products and read our guidelines for proper maintenance and care of your furniture, visit www.eberhart-furniture.com

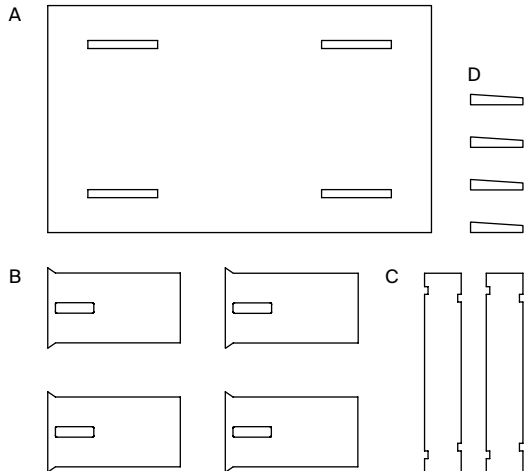
Arnold – Assembly Guide

Before we get started:

- It is advised to allow the table to remain within its original packaging at ambient room conditions for a duration of 24 hours. This step is taken to facilitate acclimatization of the materials.
- Verify the completeness of all components enclosed within the packaging.
- Safeguard the table from potential scratches by conducting the assembly either atop the provided cardboard box or utilizing a substantial blanket or carpet as a protective barrier against hard floors.
- We recommend having at least two people for assembly and advise against doing it alone.
- No tools required. If needed, gently use a small hammer to secure the wedges into a locked position, using a piece of cloth in between to protect the table. Please note, using a tool to insert the wedges requires caution, as excessive force can damage the table top.

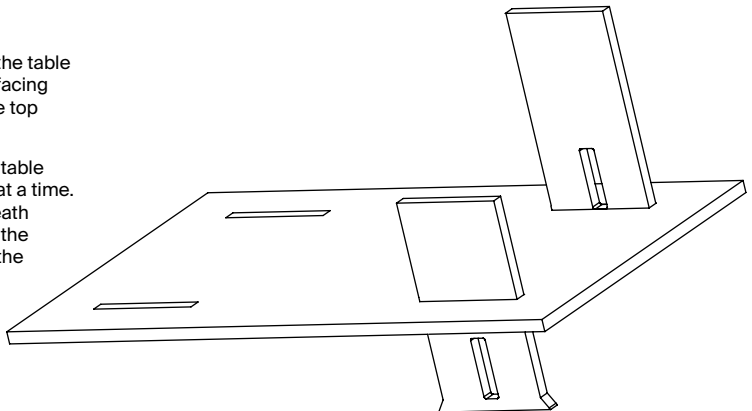
Contents:

- A. Arnold Table Top (1)
- B. Arnold Table Legs (4)
- C. Arnold Crossbeams (2)
- D. Arnold Wedges (4)



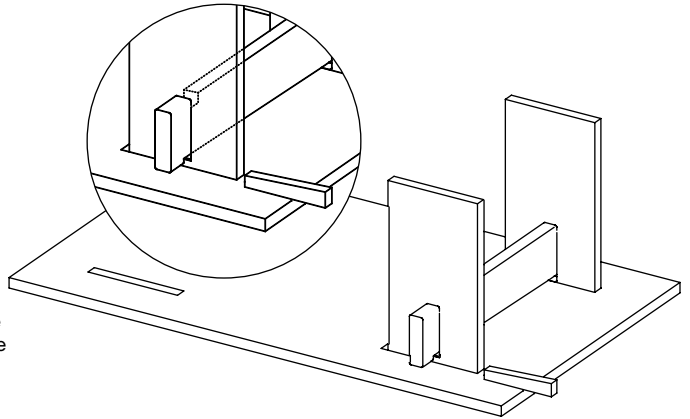
Step 1 –

- Begin by positioning the table top with its backside facing upwards. Lift the table top gently from one end.
- Proceed to insert the table legs individually, one at a time. Slide them from beneath the table top through the designated holes on the lifted side.



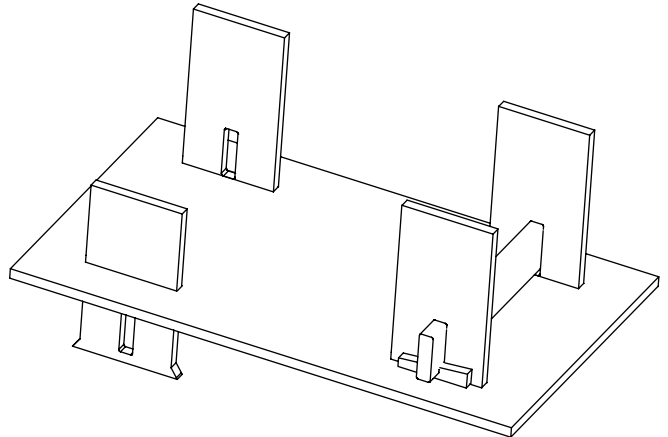
Step 2 –

- Elevate both table legs gradually while introducing the crossbeam. Connect the crossbeam by passing it through one table leg to link with the other.
- Simultaneously with the crossbeam's upward motion, cautiously place the wooden wedges into the designated grooves. Position them between the table leg and the crossbeam, ensuring a secure fit against the table top.



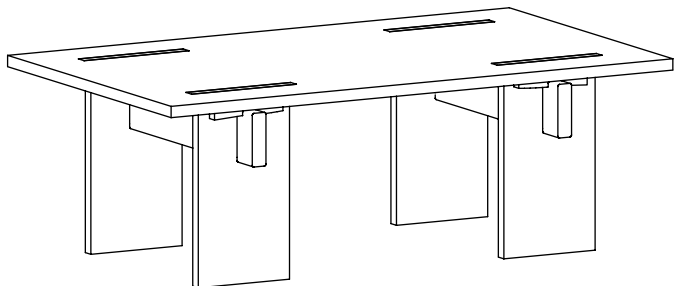
Step 3 –

- Once a pair of table legs and a crossbeam are firmly affixed, repeat steps 1 and 2 for the opposite side of the table top.
- Confirm that all components are securely interlocked, and then carefully flip the table into its upright position.



Step 4 –

- Congratulations, your new Arnold coffee table is now ready for use.
- For more details on maintenance, kindly refer to the reverse side of this booklet or visit our website: www.eberhart-furniture.com



Maintenance & Care – Information

Maintenance and care on a regular basis can prolong the life of your furniture, and make sure it will last through ages. Here, we have gathered a short introduction to inform you about the most important things to know. We highly recommend you visit the maintenance section on our website for extended maintenance information.

Concrete –

- Concrete tabletops are pre-treated with a liquid and silicone-free wax from production. If you want a raw and more variegated tabletop, we recommend using the table without further treatment. If you want a more well-protected top against everyday dirt, we recommend that you regularly treat the table with the same liquid wax that we have given the table from its birth.
- Avoid direct sunlight on the furniture the first 4 weeks.
- Wipe with a clean, damp cloth. We recommend cleaning without detergent.

Wood –

- All wooden parts are made of solid oak. Wood is a natural material, which can be affected by changing humidity, heat, direct sunlight and normal wear and tear.
- For daily care use a damp cloth without detergents or washing liquid or use cleaning products specifically designed for solid wood.
- We recommend oil treatment of the furniture 4-6 times in the first year, and afterwards minimum twice a year, preferably before and after the winter period.



Extended Maintenance Information

On our website you will find extended information on maintenance of our products, along with tips and tricks to help you take good care of your furniture. Use the camera on your smartphone to scan the QR code on the left to visit our maintenance page.

For more information, visit www.eberhart-furniture.com